

UNICRIMP[®]
●●●●● ScolmoreGROUP

EARTH RODS & COMPONENTS

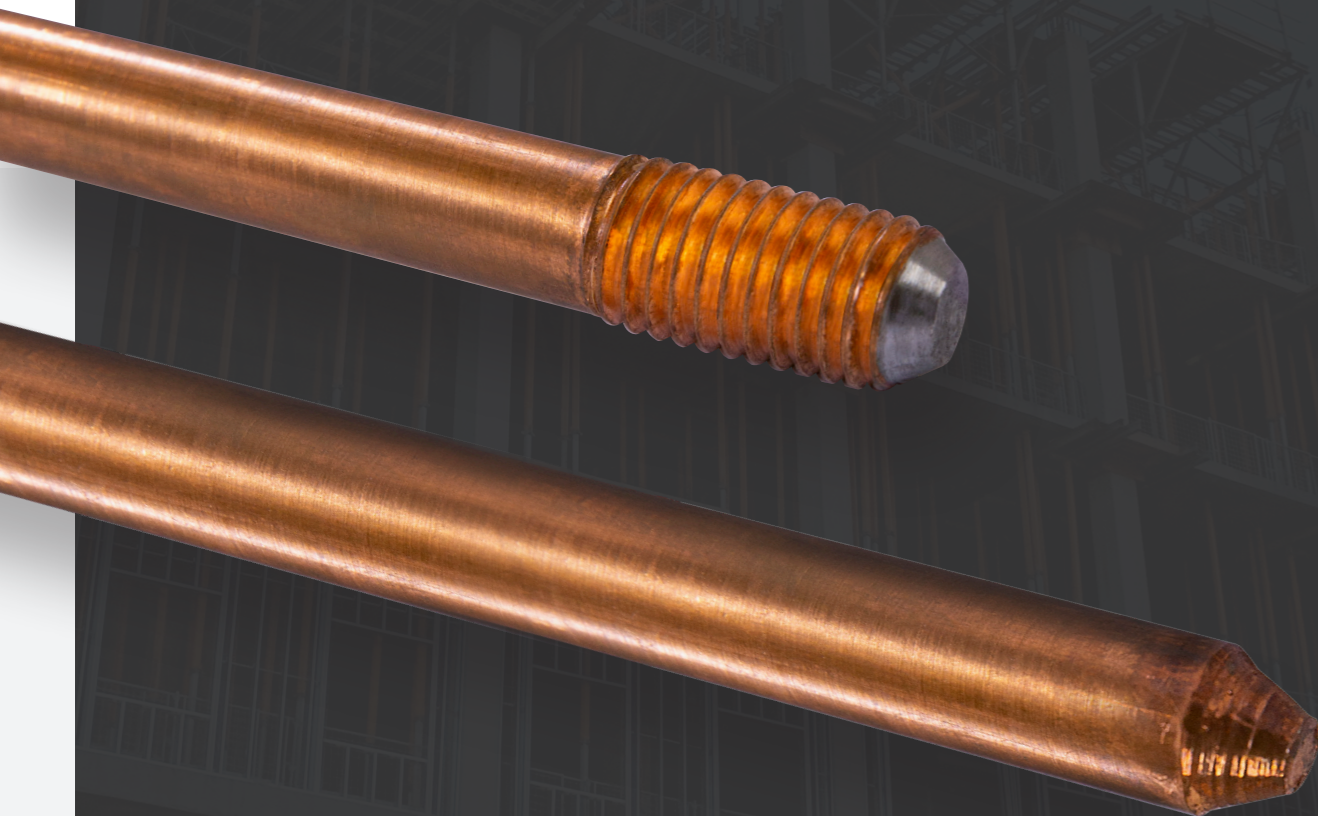
WWW.UNICRIMP.COM

Q-CRIMP®

Our range of Earthing products...

Our complete earthing system has a consistent design throughout the range, making it adaptable to meet the installers ever changing needs and simplify the overall installation.

Unicrimp® earthing products meet British, European and International standards and all components are manufactured from high quality materials designed to ensure long lasting performance even in the harshest soil conditions.



When designing and installing a ground earthing system our range provides options...

While keeping it simple, with a minimal number of components required to complete an install!

UNICRIMP®



At the heart of the system is the **Threaded Earth Rod**, made with a low carbon **high tensile steel core** and a molecular bonded **99.9% pure copper coating** for maximum conductivity, strength and durability.

Earth Electrode Box



- Supplied with a warning printed lid screwed into the box
- Compatible with 20 mm conduit
- Provision for brass earth terminal
- Suitable for countersunk installation
- M4 screw threads & fixing centers 50.8mm

3/8" Range

The 3/8 range are available in single lengths only and cannot be coupled.

QEP3812

3/8" Earth Rod - 1200MM



QEP38CC

3/8" Rod to Cable Clamp (G Type)



QEP38CL

3/8" Rod to Split Connector Clamp



5/8" Range

The 5/8 range includes couplers to join rods together

QEP5812T

5/8" Threaded Earth Rod - 1200MM



QEP58TC

5/8" Threaded Coupler



QEP58TDS

5/8" Threaded Driving Stud



QEP58CC

5/8" Rod to Cable Clamp (G Type)



QEP58CL

5/8" Rod to Split Connector Clamp



Inspection Pits

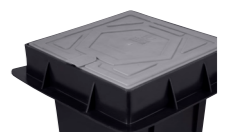
QEPIP CON

Concrete Inspection Pit



QEPIP PLA

Plastic Inspection Pit



What is Earthing & why is it important?

Earth rods are conductive metal poles driven below ground level and connected to the Earth circuit of an electrical installation. If there is a fault they provide a low resistance path that allows electricity to safely dissipate out into the ground.

An effective earthing system is a fundamental requirement of any modern structure or system for both operational and safety reasons. Without such a system, the safety of a structure, the equipment contained within it and its occupants are compromised.

There's a growing need for improved reliable earthing as current infrastructure is ageing and deteriorating and the increased use of plastics in services, reduces earthing possibilities. Earth rods offer a simple reliable solution to ongoing concerns.

Driving Stud

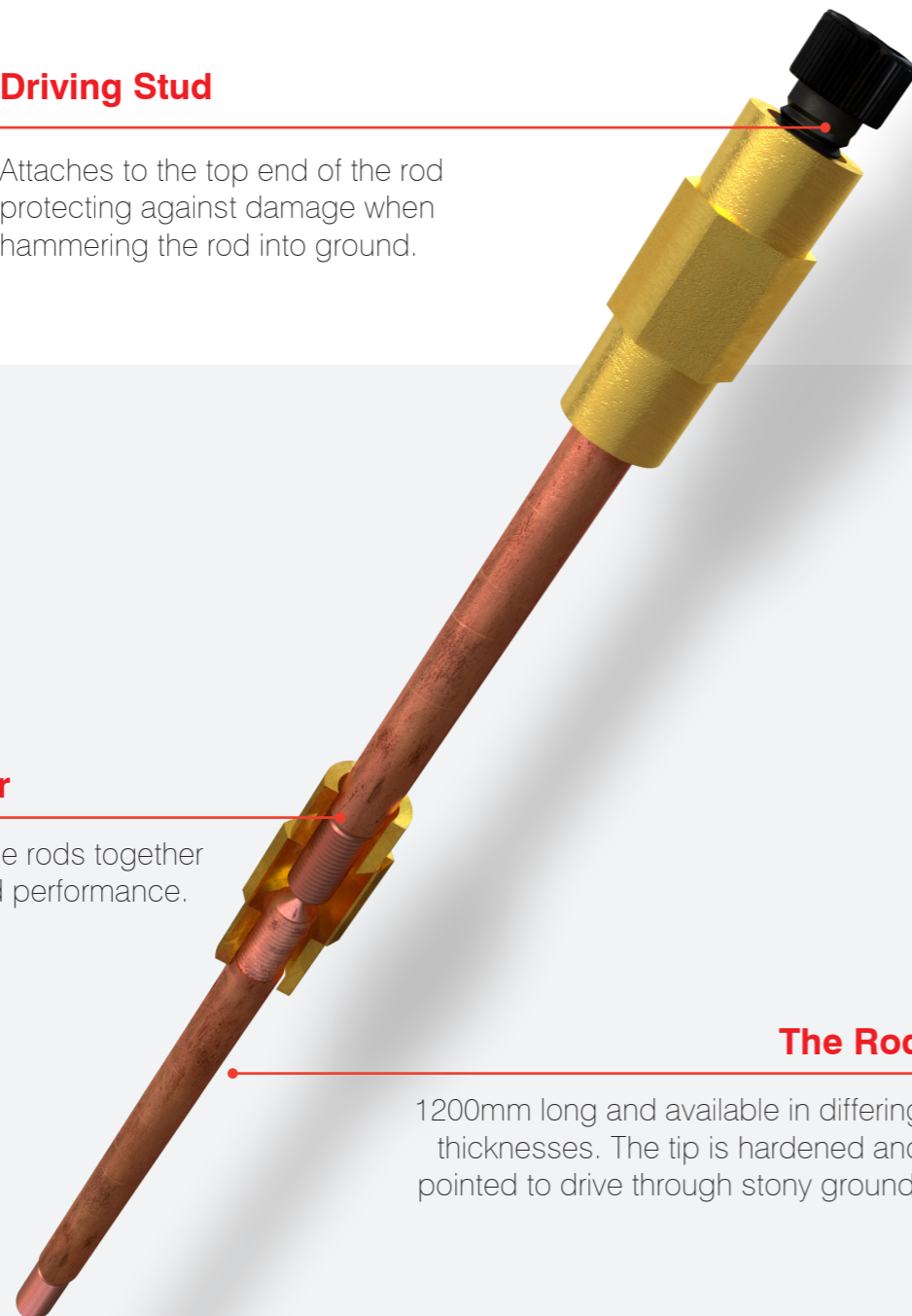
Attaches to the top end of the rod protecting against damage when hammering the rod into ground.

A Coupler

Joins multiple rods together for improved performance.

The Rod

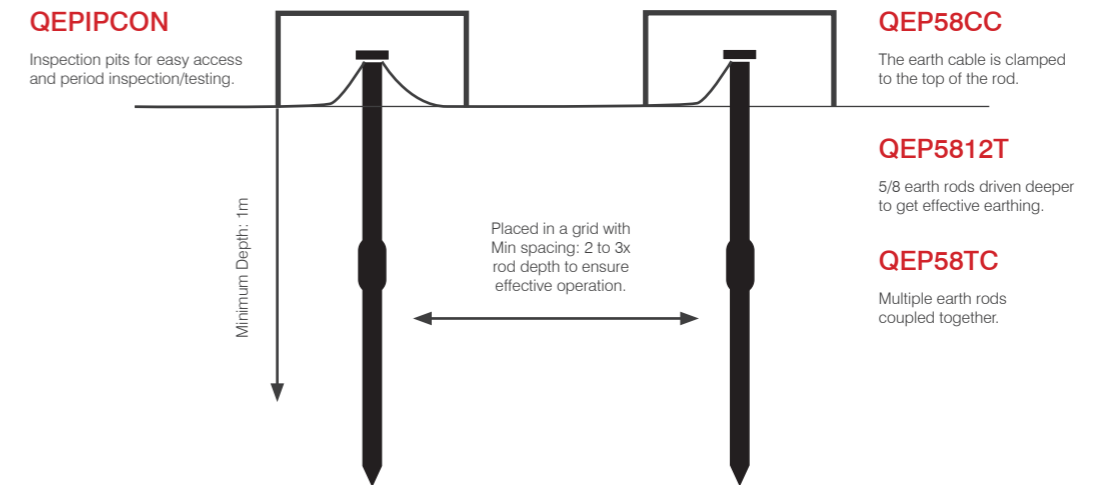
1200mm long and available in differing thicknesses. The tip is hardened and pointed to drive through stony ground.



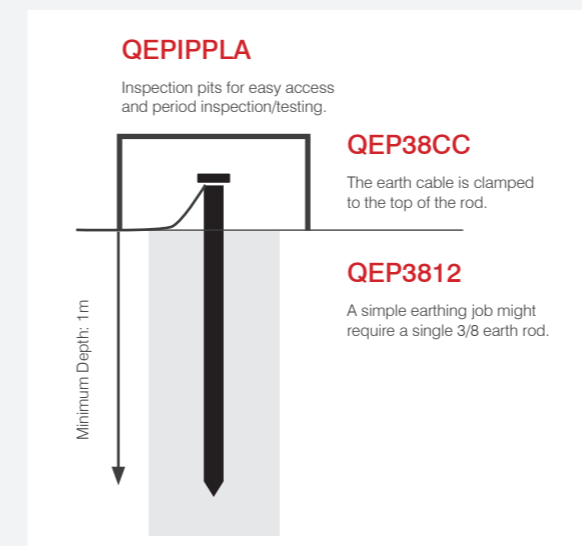
Installation & Testing

Many factors influence the performance of earth rods, such as soil type, so **testing is vital to achieve low resistance.**

Multiple Rod Install.

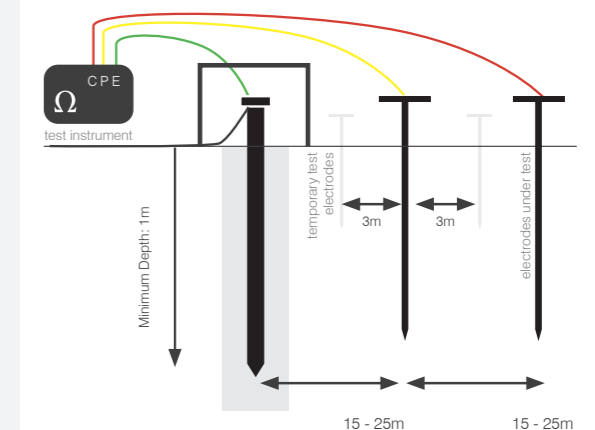


Single Rod Install.



Earth Rod Testing.

As per 18th Edition Wiring Regulations BS7671 Clause 643.7.2 Earth Electrode Resistance.



If the required resistance is not low enough additional rods are installed to make the depth greater until the resistance is lowered to the required value.

United Kingdom

UNICRIMP[®]

Scolmore House, Mariner
Lichfield Road Industrial Estate,
Tamworth, Staffordshire,
B79 7UL

T: +44 (0)1827 300 600
E: sales@unicrimp.com
www.unicrimp.com



Southern Ireland

CLICK[®] Litehouse

18 Corrig Road,
Sandyford Industrial Estate,
Dublin, D18 W79, Ireland

T: +353 (1) 2811 122
E: sales@clicklitehouse.ie
www.clicklitehouse.ie



Dubai, UAE

Scolmore[®]
D U B A I

Lake Central Tower,
Office 1803, Business Bay,
Dubai, UAE

UAE Office: +971 4589 6552
E: sales@scolmoredubai.com
www.scolmoredubai.com

