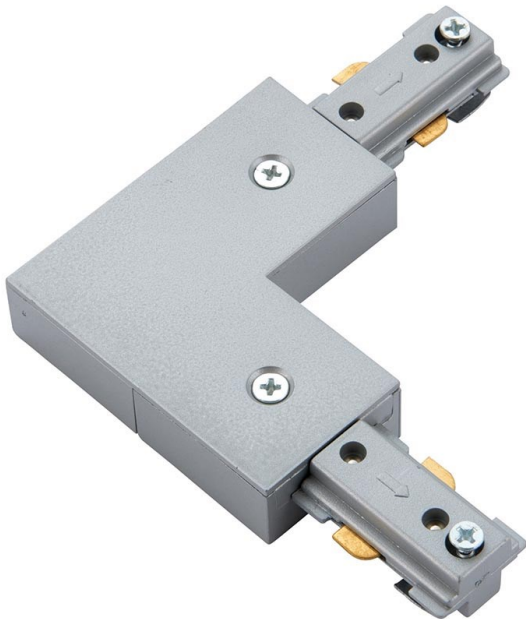


Track I connector

72723



72723

Ideal for display purposes where great flexibility is required. The perfect fitting for retail, commercial & domestic applications.

Dimmable

Silver paint

Constructed from polycarbonate & steel

Shipment Carton Qty: 50

 [Save As PDF](#)

| Overview | Specification | Specification | Dimensons | Pack Quantities | Case Quantities |
|---|---------------|---------------|-----------|-----------------|-----------------|
| <ul style="list-style-type: none">• H: 17mm W: 107mm L: 107mm• Class 1• 2YR Warranty• Weight: 0.1 Kg | | | | | |